

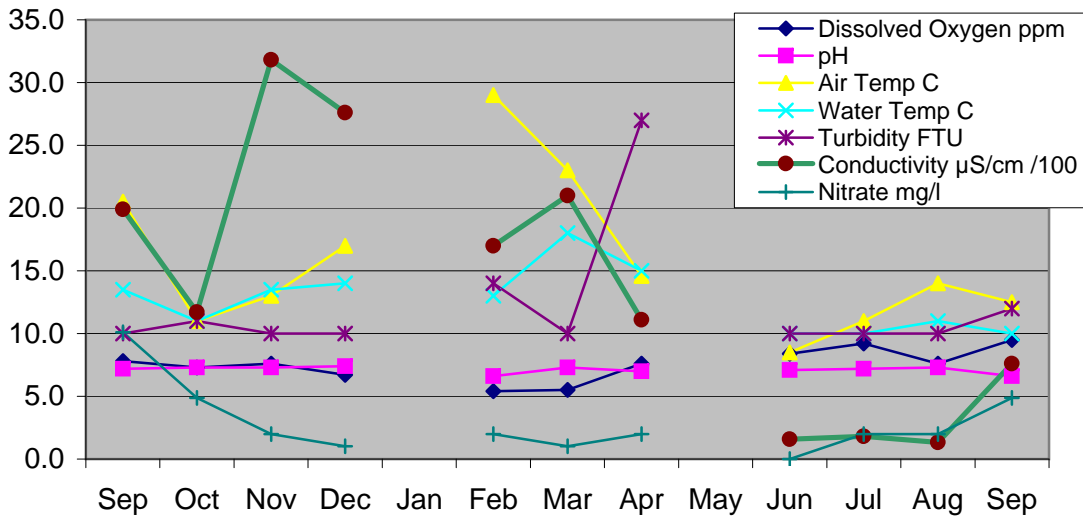
DAMPER CREEK - East Branch

Location: MW site YDP 035

Water Quality Test	Sep	Oct	Nov	Dec	Jan	Feb	Mar	Apr	May	Jun	Jul	Aug	Sep
Time	8.9.16 10.30	14.10.16 10.45	10.11.16 10.35	15.12.16 10.30	No tests	9.2.17 10.35	9.3.17 10.55	12.4.17 10.30	No Measure	8.6.17 10.30	13.7.17 10.20	10.8.17 10.30	14.9.17 10.35
Dissolved Oxy ₂ ml ppm	7.8	7.3	7.6	6.7		5.4	5.5	7.6		8.4	9.2	7.6	9.5
pH	7.2	7.3	7.3	7.4		6.6	7.3	7.0		7.1	7.2	7.3	6.6
Air Temperature °C	20.5	11.0	13.0	17.0		29.0	23.0	14.6		8.5	11.0	14.0	12.5
Water temperature °C	13.5	11.0	13.5	14.0		13.0	18.0	15.0		10.0	10.0	11.0	10.0
Conductivity* μS/cm /100	19.9	11.7	31.8	27.6		17	21	11.1		1.57	1.8	1.33	7.6
Turbidity NTU	10	11	10	10		14	10	27		10	10	10	12
Soluble Phosp PO ₄ (ppm), P(ppm)	0.05	0.04	0.04	0.03		0.078	0.022	0.082		0.0293	0.05868	0.0652	0.08802
Ammonia-Nitrogen NH ₄ (mg/l)	0.4	0.3	0.5	0.35		0.5	0.5	0.3		0.07	0.07	0.01	0.2
Nitrate NO ₃ (mg/l)	10.1	4.87	1.9935	1.0189		1.999	1.02	2		0	1.9935	1.9935	4.873

* Multiply by 100 to get actual value

Water Quality: East Branch Sep 2016 - Sep 2017



DAMPER CREEK - North Branch

Location: MW site YDP 037

	Sep	Oct	Nov	Dec	Jan	Feb	Mar	Apr	May	Jun	Jul	Aug	Sep
Water Quality Test	8.9.16	14.10.16	10.11.16	15.12.16	No Tests	9.2.17	9.3.17	12.4.17	No	8.6.17	13.7.17	10.8.17	14.9.17
<i>Time</i>	9.40	9.45	9.40	9.40		9.40	10.05	9.45	Measure	9.40	9.40	9.45	9.45
<i>Dissolved Oxy</i> , ml ppm	8.2	7.3	1.5	0.8		2.7	0.0	7.5		8.8	9.0	8.8	8.8
<i>pH</i>	7.2	7.4	7.1	6.9		6.8	6.9	7.0		7.3	7.2	6.6	6.8
<i>Air Temperature</i> , °C	20.0	11.0	13.0	15.0		29.0	22.0	14.0		8.0	9.0	13.0	10.0
<i>Water temperature</i> , °C	13.0	11.0	13.0	14.0		21.0	16.5	13.5		8.0	10.0	10.0	10.0
<i>Conductivity*</i> , µS/cm /100	1	6.6	5.2	4.7		5.8	3.5	3.2		2.5	1.8	1.9	1.5
<i>Turbidity</i> , NTU	17	10	10	10		25	50	10		10	10	10	10
<i>Soluble Phosp PO₄</i> (ppm), P(ppm)	0.059	0.12	0.104	0.085		0.05	0.01	0.033		0.0619	0.052	0.0652	0.08802
<i>Ammonia-Nitrogen</i> , NH ₄ (mg/l)	0	0.02	0.3	0.5		0.04	0	0.04		0.01	0.01	0	0.02
<i>Nitrate</i> , NO ₃ (mg/l)	1.02	2	0	0		1.02	0	0		0	0	1.0189	1.0189

* Multiply by 100 to get actual value

Water Quality: North Branch Sep 2016 - Sep 2017

