

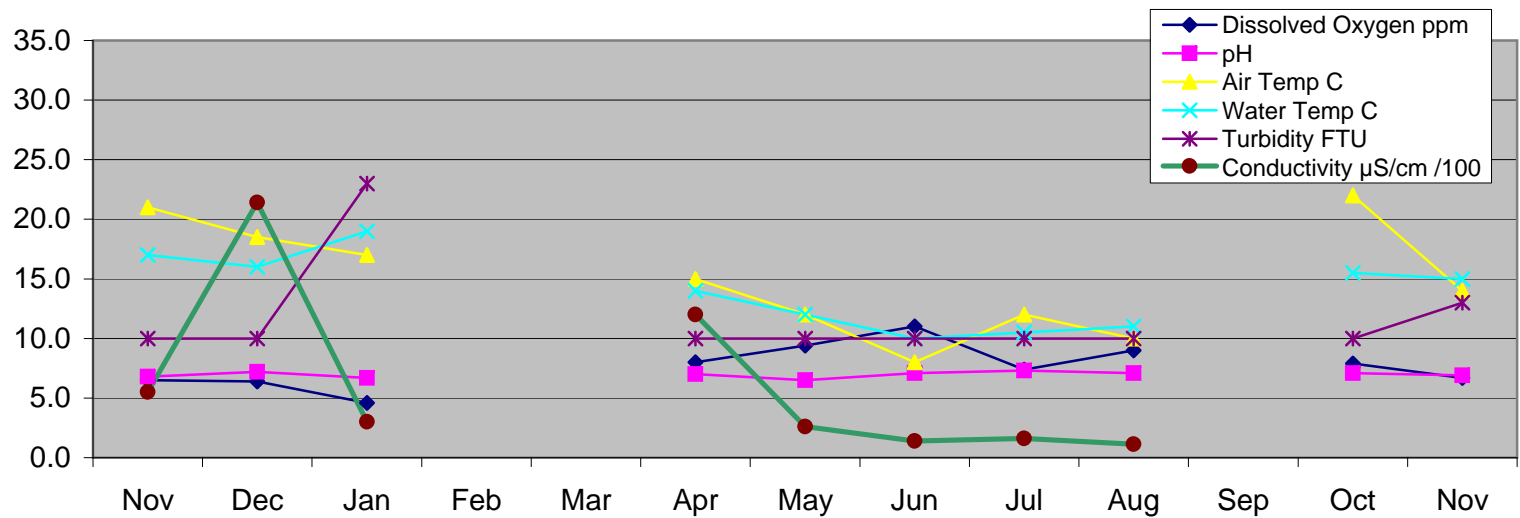
## DAMPER CREEK - East Branch

Location: MW site YDP 035

	Nov	Dec	Jan	Feb	Mar	Apr	May	Jun	Jul	Aug	Sep	Oct	Nov
<b>Water Quality Test</b>	21.11.14	12.12.14	9.1.15	No Tests	No tests	10.4.15	15.5.15	12.6.15	10.7.15	14.8.15		9.10.15	13.11.15
<i>Time</i>	10.30	10.00	10.30			10.20	9.40	11.15	10.30	9.20		10.40	10.35
<i>Dissolved Oxy</i> ml ppm	6.5	6.4	4.6			8.0	9.4	11.0	7.4	9.0		7.9	6.7
<i>pH</i>	6.8	7.2	6.7			7.0	6.5	7.1	7.3	7.1		7.1	6.9
<i>Air Temperature</i> °C	21.0	18.5	17.0			15.0	12.0	8.0	12.0	10.0		22.0	14.0
<i>Water temperature</i> °C	17.0	16.0	19.0			14.0	12.0	10.0	10.5	11.0		15.5	15.0
<i>Conductivity*</i> μS/cm /100	5.5	21.4	3			12	2.6	1.41	1.62	1.14		35.8	
<i>Turbidity</i> NTU	10	10	23			10	10	10	10	10		10	13
<i>Soluble Phosp</i> PO <sub>4</sub> (ppm), P(ppm)	0.02934	0.10106	0.05542			0.05542	0.00652	0.05868	0.0652	0.04238		0.06194	
<i>Ammonia-Nitrogen</i> NH <sub>4</sub> (mg/l)	0.1	0.4	0.3			0.15	0.04	0.15	0.15	0		0.5	0.4
<i>Chlorine</i>													

\* Multiply by 100 to get actual value

### Water Quality: East Branch Nov 2014 - Nov 2015



### DAMPER CREEK - North Branch

Location: MW site YDP 037

	Nov	Dec	Jan	Feb	Mar	Apr	May	Jun	Jul	Aug	Sep	Oct	Nov
<b>Water Quality Test</b>	21.11.14	12.12.14	9.1.15	No Tests	No tests	10.4.15	15.5.15	12.6.15	10.7.15	14.8.15		9.10.15	13.11.15
<i>Time</i>	9.40	9.30	9.30			9.30	10.20	10	9.30	8.30		9.40	9.35
<i>Dissolved Oxy</i> ml ppm	7.0	0.5	4.7			5.8	8.2	10.6	8.7	8.3		1.8	5.8
<i>pH</i>	6.7	7.2	6.2			6.7	6.7	7.2	7.5	7.2		7.1	6.3
<i>Air Temperature</i> °C	19.0	18.0	18.0			14.0	12.5	6.0	11.0	10.0		10.0	15.0
<i>Water temperature</i> °C	18.0	16.0	19.5			12.0	13.0	8.5	9.0	9.5		9.5	16.0
<i>Conductivity*</i> μS/cm /100	2.7	3.8	1.2			3.1	5	2.2	2	3.7		11.3	
<i>Turbidity</i> NTU	10	25	38			10	10	10	12	10		50	40
<i>Soluble Phosp PO<sub>4</sub></i> (ppm), P(ppm)	0.1826	0.20864	0.08476			0.08476	0.02608	0.06846	0.08476	0.075		0.153	
<i>Ammonia-Nitrogen</i> NH <sub>4</sub> (mg/l)	0	0	0.35			0.45	0.1	0.04	0.03	0		0.02	0.07
<i>Chlorine</i>													

\* Multiply by 100 to get actual value

#### Water Quality: North Branch Nov 2014 - Nov 2015

