

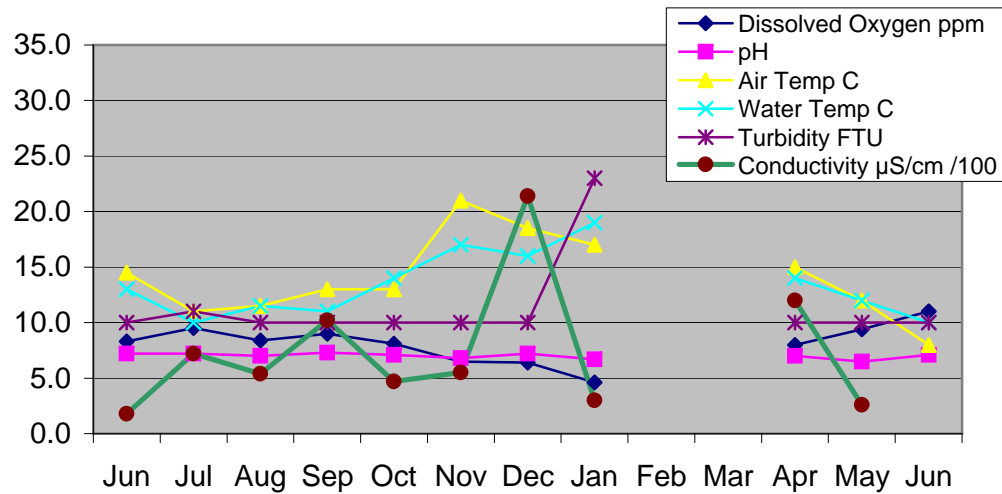
DAMPER CREEK - East Branch

Location: MW site YDP 035

Water Quality Test	Jun 13.6.14	Jul 11.7.14	Aug 8.8.14	Sep 12.9.14	Oct 13.10.14	Nov 21.11.14	Dec 12.12.14	Jan 9.1.15	Feb No Tests	Mar No tests	Apr 10.4.15	May 15.5.15	Jun 12.6.15
Time	10.25	10.20	9.55	10.30	10.55	10.30	10.00	10.30			10.20	9.40	11.15
Dissolved Oxy, ml ppm	8.3	9.5	8.4	9.0	8.1	6.5	6.4	4.6			8.0	9.4	11.0
pH	7.2	7.2	7.0	7.3	7.1	6.8	7.2	6.7			7.0	6.5	7.1
Air Temperature °C	14.5	11.0	11.5	13.0	13.0	21.0	18.5	17.0			15.0	12.0	8.0
Water temperature °C	13.0	10.0	11.5	11.0	14.0	17.0	16.0	19.0			14.0	12.0	10.0
Conductivity* μS/cm /100	1.8	7.2	5.4	10.2	4.7	5.5	21.4	3			12	2.6	1.41
Turbidity NTU	10	11	10	10	10	10	10	23			10	10	10
Soluble Phosp PO ₄ (ppm), P(ppm)	0.092	0.1826	0.03586	0.03586	0.0326	0.02934	0.10106	0.05542			0.05542	0.00652	0.05868
Ammonia-Nitrogen NH ₄ (mg/l)	0.4	0.5	0.5	0.3	0.15	0.1	0.4	0.3			0.15	0.04	0.15
Chlorine													

* Multiply by 100 to get actual value

Water Quality: East Branch Jun 2014 - Jun 2015



DAMPER CREEK - North Branch

Location: MW site YDP 037

Water Quality Test	Jun 13.6.14	Jul 11.7.14	Aug 8.8.14	Sep 12.9.14	Oct 13.10.14	Nov 21.11.14	Dec 12.12.14	Jan 9.1.15	Feb No Tests	Mar No tests	Apr 10.4.15	May 15.5.15	Jun 12.6.15
Time	9.35	9.40	9.20	9.40	10.05	9.40	9.30	9.30			9.30	10.20	10
Dissolved Oxy, ml ppm	8.5	10.0	9.6	9.0	9.0	7.0	0.5	4.7			5.8	8.2	10.6
pH	6.9	7.1	6.9	7.1	7.1	6.7	7.2	6.2			6.7	6.7	7.2
Air Temperature °C	12.0	11.0	11.0	10.0	14.0	19.0	18.0	18.0			14.0	12.5	6.0
Water temperature °C	12.0	10.0	10.5	10.0	13.0	18.0	16.0	19.5			12.0	13.0	8.5
Conductivity* μS/cm /100	1.2	1.7	1.9	3.5	6.4	2.7	3.8	1.2			3.1	5	2.2
Turbidity NTU	10	10	10	10	10	10	25	38			10	10	10
Soluble Phosp PO ₄ (ppm), P(ppm)	0.075	0.1141	0.0359	0.07122	0.18582	0.1826	0.20864	0.08476			0.08476	0.02608	0.06846
Ammonia-Nitrogen NH ₄ (mg/l)	0	0	0	0.15	0.4	0	0	0.35			0.45	0.1	0.04
Chlorine													

* Multiply by 100 to get actual value

Water Quality: North Branch Jun 2014 - Jun 2015

