

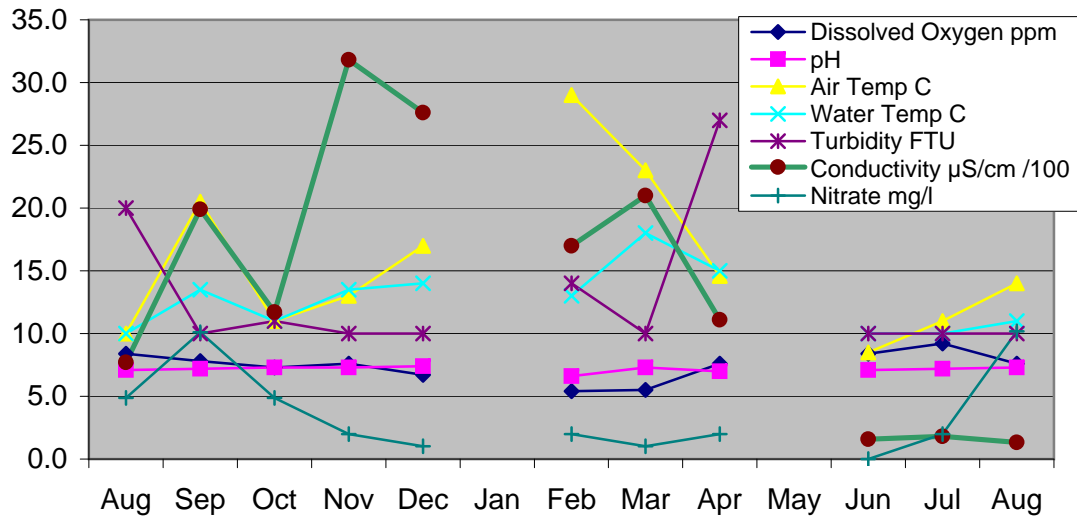
DAMPER CREEK - East Branch

Location: MW site YDP 035

Water Quality Test	Aug	Sep	Oct	Nov	Dec	Jan	Feb	Mar	Apr	May	Jun	Jul	Aug
Time	11.8.16 10.30	8.9.16 10.30	14.10.16 10.45	10.11.16 10.35	15.12.16 10.30	No tests	9.2.17 10.35	9.3.17 10.55	12.4.17 10.30	No Measure	8.6.17 10.30	13.7.17 10.20	10.8.17 10.30
Dissolved Oxy, ml ppm	8.4	7.8	7.3	7.6	6.7		5.4	5.5	7.6		8.4	9.2	7.6
pH	7.1	7.2	7.3	7.3	7.4		6.6	7.3	7.0		7.1	7.2	7.3
Air Temperature °C	10.0	20.5	11.0	13.0	17.0		29.0	23.0	14.6		8.5	11.0	14.0
Water temperature °C	10.0	13.5	11.0	13.5	14.0		13.0	18.0	15.0		10.0	10.0	11.0
Conductivity* μS/cm /100	7.7	19.9	11.7	31.8	27.6		17	21	11.1		1.57	1.8	1.33
Turbidity NTU	20	10	11	10	10		14	10	27		10	10	10
Soluble Phosp PO ₄ (ppm), P(ppm)	0.059	0.05	0.04	0.04	0.03		0.078	0.022	0.082		0.0293	0.05868	0.0652
Ammonia-Nitrogen NH ₄ (mg/l)	0.5	0.4	0.3	0.5	0.35		0.5	0.5	0.3		0.07	0.07	0.01
Nitrate NO ₃ (mg/l)	4.87	10.1	4.87	1.9935	1.0189		1.999	1.02	2		0	1.9935	10.189

* Multiply by 100 to get actual value

Water Quality: East Branch Aug 2016 - Aug 2017



DAMPER CREEK - North Branch

Location: MW site YDP 037

Water Quality Test	Aug 11.8.16	Sep 8.9.16	Oct 14.10.16	Nov 10.11.16	Dec 15.12.16	Jan No Tests	Feb 9.2.17	Mar 9.3.17	Apr 12.4.17	May No	Jun 8.6.17	Jul 13.7.17	Aug 10.8.17
Time	9.40	9.40	9.45	9.40	9.40		9.40	10.05	9.45	Measure	9.40	9.40	9.45
Dissolved Oxy, ml ppm	8.4	8.2	7.3	1.5	0.8		2.7	0.0	7.5		8.8	9.0	8.8
pH	6.8	7.2	7.4	7.1	6.9		6.8	6.9	7.0		7.3	7.2	6.6
Air Temperature °C	9.0	20.0	11.0	13.0	15.0		29.0	22.0	14.0		8.0	9.0	13.0
Water temperature °C	9.0	13.0	11.0	13.0	14.0		21.0	16.5	13.5		8.0	10.0	10.0
Conductivity* μS/cm /100	1.5	1	6.6	5.2	4.7		5.8	3.5	3.2		2.5	1.8	1.9
Turbidity NTU	25	17	10	10	10		25	50	10		10	10	10
Soluble Phosp PO ₄ (ppm), P(ppm)	0.059	0.059	0.12	0.104	0.085		0.05	0.01	0.033		0.0619	0.052	0.0652
Ammonia-Nitrogen NH ₄ (mg/l)	0	0	0.02	0.3	0.5		0.04	0	0.04		0.01	0.01	0
Nitrate NO ₃ (mg/l)	1.99	1.02	2	0	0		1.02	0	0		0	0	1.0189

* Multiply by 100 to get actual value

Water Quality: North Branch Aug 2016 - Aug 2017

