

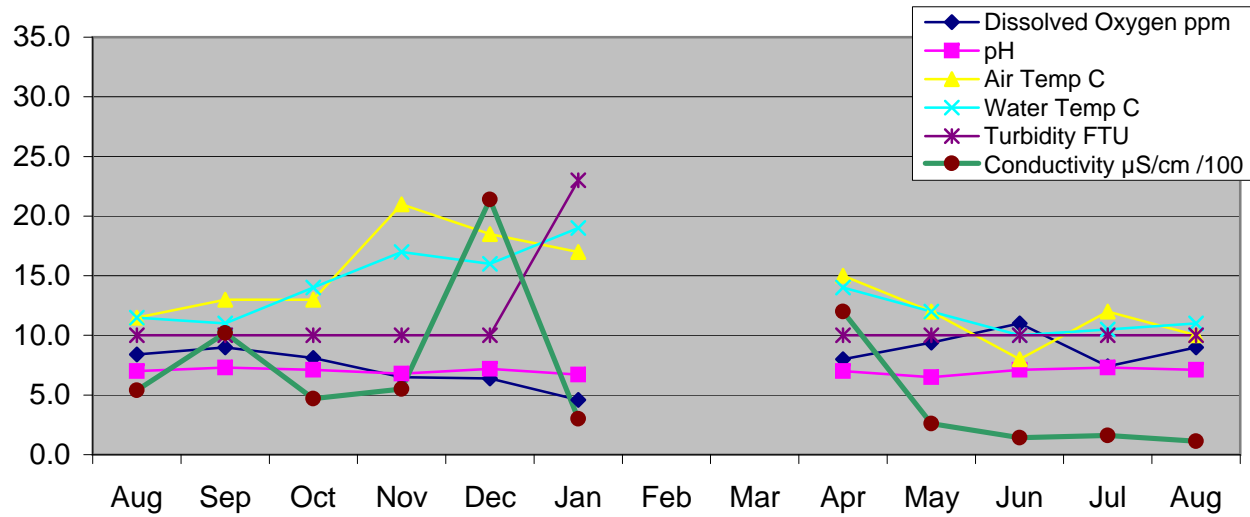
### DAMPER CREEK - East Branch

Location: MW site YDP 035

Water Quality Test	Aug	Sep	Oct	Nov	Dec	Jan	Feb	Mar	Apr	May	Jun	Jul	Aug
Time	8.8.14	12.9.14	13.10.14	21.11.14	12.12.14	9.1.15	No Tests	No tests	10.4.15	15.5.15	12.6.15	10.7.15	14.8.15
	9.55	10.30	10.55	10.30	10.00	10.30			10.20	9.40	11.15	10.30	9.20
Dissolved Oxy, ml ppm	8.4	9.0	8.1	6.5	6.4	4.6			8.0	9.4	11.0	7.4	9.0
pH	7.0	7.3	7.1	6.8	7.2	6.7			7.0	6.5	7.1	7.3	7.1
Air Temperature °C	11.5	13.0	13.0	21.0	18.5	17.0			15.0	12.0	8.0	12.0	10.0
Water temperature °C	11.5	11.0	14.0	17.0	16.0	19.0			14.0	12.0	10.0	10.5	11.0
Conductivity* μS/cm /100	5.4	10.2	4.7	5.5	21.4	3			12	2.6	1.41	1.62	1.14
Turbidity NTU	10	10	10	10	10	23			10	10	10	10	10
Soluble Phosp PO <sub>4</sub> (ppm), P(ppm)	0.03586	0.03586	0.0326	0.02934	0.10106	0.05542			0.05542	0.00652	0.05868	0.0652	0.04238
Ammonia-Nitrogen NH <sub>4</sub> (mg/l)	0.5	0.3	0.15	0.1	0.4	0.3			0.15	0.04	0.15	0.15	0
Chlorine													

\* Multiply by 100 to get actual value

#### Water Quality: East Branch Aug 2014 - Aug 2015



### DAMPER CREEK - North Branch

Location: MW site YDP 037

Water Quality Test	Aug	Sep	Oct	Nov	Dec	Jan	Feb	Mar	Apr	May	Jun	Jul	Aug
Time	8.8.14	12.9.14	13.10.14	21.11.14	12.12.14	9.1.15	No Tests	No tests	10.4.15	15.5.15	12.6.15	10.7.15	14.8.15
	9.20	9.40	10.05	9.40	9.30	9.30			9.30	10.20	10	9.30	8.30
Dissolved Oxy, ml ppm	9.6	9.0	9.0	7.0	0.5	4.7			5.8	8.2	10.6	8.7	8.3
pH	6.9	7.1	7.1	6.7	7.2	6.2			6.7	6.7	7.2	7.5	7.2
Air Temperature °C	11.0	10.0	14.0	19.0	18.0	18.0			14.0	12.5	6.0	11.0	10.0
Water temperature °C	10.5	10.0	13.0	18.0	16.0	19.5			12.0	13.0	8.5	9.0	9.5
Conductivity* μS/cm /100	1.9	3.5	6.4	2.7	3.8	1.2			3.1	5	2.2	2	3.7
Turbidity NTU	10	10	10	10	25	38			10	10	10	12	10
Soluble Phosp PO <sub>4</sub> (ppm), P(ppm)	0.0359	0.07122	0.18582	0.1826	0.20864	0.08476			0.08476	0.02608	0.06846	0.08476	0.075
Ammonia-Nitrogen NH <sub>4</sub> (mg/l)	0	0.15	0.4	0	0	0.35			0.45	0.1	0.04	0.03	0
Chlorine													

\* Multiply by 100 to get actual value

#### Water Quality: North Branch Aug 2014 - Aug 2015

